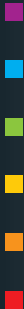


Caparol Buntstift 3D – ColorPen 3D

Kurzanleitung – Quickstart Guide



2 Components

Componenti
Komponenten

Componentes
Composants
组件



- EN**
- 1 Power on/off
 - 2 Measure button
 - 3 Navigation control
 - 4 Enter button
 - 5 USB connection
 - 6 Speaker and Microphone
 - 7 Display
 - 8 Ref. Slider

- DE**
- 1 Ein-/Ausschalter
 - 2 Messtaste
 - 3 Navigationstaste
 - 4 Eingabetaste
 - 5 USB-Anschluss
 - 6 Lautsprecher und Mikrofon
 - 7 Display
 - 8 Referenzschieber

- FR**
- 1 Marche/Arrêt
 - 2 Bouton Mesurer
 - 3 Touches de navigation
 - 4 Bouton Entrée
 - 5 Connexion USB
 - 6 Haut-parleur et micro
 - 7 Écran
 - 8 Référence

- ES**
- 1 Encender o apagar
 - 2 Botón "Medir"
 - 3 Control de exploración
 - 4 Botón "Entrar"
 - 5 Conexión USB
 - 6 Altavoz y micrófono
 - 7 Visor
 - 8 Deslizante de la ref.

- IT**
- 1 Pulsante on/off
 - 2 Pulsante Misura
 - 3 Controllo per lo spostamento
 - 4 Pulsante Enter
 - 5 Connessione USB
 - 6 Altoparlante e microfono
 - 7 Display
 - 8 Scorrimento del riferimento

- CH**
- 1 电源 on/off (开/关)
 - 2 测量按钮
 - 3 导航控件
 - 4 Enter 按钮
 - 5 USB 连接
 - 6 扬声器和麦克风
 - 7 显示屏
 - 8 参考滑块

EN Install Software. Then connect ColorPen 3D to computer with USB cable. Charge batteries 4–6 hours.

FR Installez le logiciel. Connectez ensuite ColorPen 3D à l'ordinateur à l'aide du câble USB. Chargez les batteries pendant 4–6 heures.

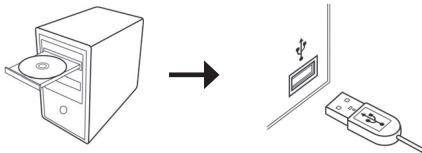
IT Installare il software. Quindi, collegare ColorPen 3D al computer con un cavo USB. Caricare le batterie durante 4–6 ore.

DE Programm installieren. Buntstift 3D per USB an den Computer anschließen. Akku für 4–6 Stunden laden.

ES Instale el software. A continuación, conecte ColorPen 3D a la computadora por medio del cable USB.

CH Cargue las baterías durante 4–6 horas.

安装软件。然后使用 USB 电缆将 ColorPen 3D 连接至计算机。电池充电需要 4 至 6 个小时



EN If not already on, press **Power on/off** (1) to turn on instrument and select desired language.

FR Si vous ne l'avez pas encore fait, appuyez sur **Marche/Arrêt** (1) pour mettre l'instrument en marche, puis sélectionnez la langue désirée.

IT Se non è già in funzione, premere il **Pulsante on/off** (1) per accendere lo strumento e selezionare l'idioma desiderato.

DE Gerät mit **Ein-/Ausschalter** (1) einschalten und gewünschte Sprache wählen.

ES Si el instrumento no está encendido, presione el botón **Encender o apagar** (1) para encenderlo y seleccione el idioma deseado.

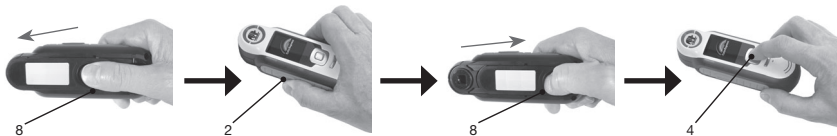
CH 如果尚未开启，请按电源 on/off（开/关）按钮（1），打开仪器并选择所需语言。



EN To calibrate, position reference slider (8) over optics and press **Measure** (2). When finished, position reference slider (8) back to storage location and press **Enter** (4).

FR Pour étalonner, positionnez la référence (8) sur l'optique, puis appuyez sur **Mesurer** (2). Une fois terminé, rangez la référence (8), puis appuyez sur **Entrée** (4).

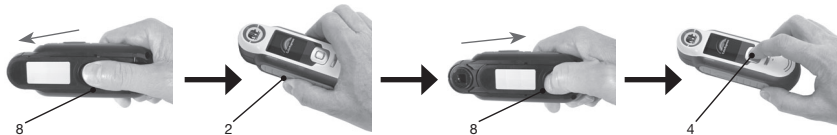
IT Per calibrare lo strumento, posizionare il dispositivo di scorrimento del riferimento (8) sull'ottica e premere il pulsante **Misura** (2). Al termine, tornare il dispositivo di scorrimento del riferimento (8) alla posizione di immagazzinaggio e premere il pulsante **Enter** (4).



DE Kalibrierung: Referenzschieber (8) über Optik schieben und **Messtaste** (2) drücken. Anschließend Referenzschieber (8) in Ausgangsposition schieben und **Eingabetaste** (4) drücken.

ES Para calibrar el instrumento, coloque el deslizante de la referencia (8) sobre la óptica y presione **Medir** (2). Cuando haya finalizado, coloque el deslizante de la referencia (8) de vuelta a la ubicación de almacenamiento y presione **Entrar** (4).

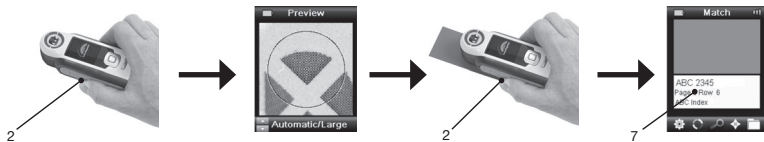
CH 要进行校准，请将参考滑块（8）置于光学器件之上，然后按测量（2）。完成后，请将参考滑块（8）放回到存储位置，然后按 Enter（4）。



EN To measure, lightly press and hold **Measure** button (2) and position instrument on sample. Press **Measure** firmly (2) to take measurement. View results on **Display** (7).

FR Pour mesurer, appuyez légèrement sur **Mesurer** (2) et maintenez le bouton enfoncé, puis positionnez l'instrument sur l'échantillon. Pour prendre la mesure, appuyez fermement sur **Mesurer** (2). Les résultats s'affichent à l'**écran** (7).

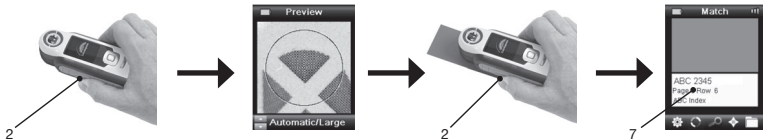
IT Per misurare, premere leggermente e tenere premuto il pulsante **Misura** (2) e posizionare lo strumento sul campione. Premere fermo il pulsante **Misura** (2) per prendere la misurazione. Visualizzare i risultati sul **Display** (7).



DE Messung: **Messtaste** (2) leicht andrücken und halten. Gerät dabei auf Probe platzieren.
Messtaste (2) für Messung durchdrücken. **Display** (7) zeigt Messergebnis an.

ES Para realizar una medición, presione ligeramente y mantenga presionado el botón **Medir** (2) y coloque el instrumento sobre la muestra. Presione firmemente el botón **Medir** (2) para realizar la medición. Vea los resultados en el **Visor** (7).

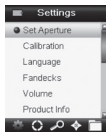
CH 要进行测量，请轻轻按住测量（2）并把仪器置于样本上。紧按测量（2）开始测量。
 在显示屏（7）上查看结果。



EN Review user options on CD Manual: Settings, Color Picker, Navigation, Tags, Records.

FR Prenez connaissance des options utilisateur dans le manuel figurant sur le CD : Paramètres, Sélecteur de couleurs, Navigateur, Étiquettes, Enregistrements.

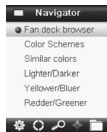
IT Consultare le opzioni utente sul CD del Manuale: Impostazioni, Color Picker, Navigator, Etichette, Registri.



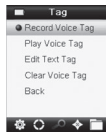
Settings
Paramètres
Impostazioni



Color Picker
Sélecteur de couleurs
Color Picker



Navigator
Navigateur
Navigator



Tags
Étiquettes
Etichette

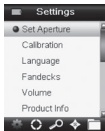


Records
Enregistrements
Registri

DE Weitere Informationen im Handbuch auf CD: Einstellungen, Farbwahl, Navigator, Notizen, Speicher.

ES Consulte las opciones del usuario en el CD del Manual: Configuración, Color Picker, Navigator, Etiquetas, Registros.

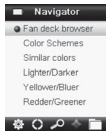
CH 查看 CD 手册上的用户选项：设置、颜色挑选器、导航器、标签、记录。



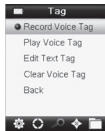
Einstellungen
Configuración
设置



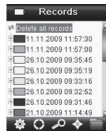
Farbwahl
Color Picker
颜色挑选器



Navigator
Navigator
导航器



Notizen
Etiquetas
标签



Speicher
Registros
记录

Equipment Information

Use of this equipment in a manner other than that specified by X-Rite, Incorporated may compromise design integrity and become unsafe. Warning: This instrument is not for use in explosive environments. For your safety, do not look directly into the measurement optics when the instrument is on. Do not immerse the instrument in liquid. Cold weather may affect the speed of the display and the accuracy of matches. Do not expose the instrument to extreme heat; do not leave in the sun.

CE Declaration

Manufacturer's Name:	X-Rite, Incorporated
Authorized Representative:	X-Rite, Incorporated Siemensstraße 12b • 63263 Neu-Isenburg • Germany Phone +49 6102 7957-0 • Fax +49 6102 7957-57
Model Name:	CAPSURE
Model No.:	RM200
Directive(s) Conformance:	EMC 2004/108/EC

RoHS/WEEE

X-Rite products meet the Restriction of Hazardous Substances (RoHS) Directive 2002/95/EC and European Union – Waste Electrical and Electronic Equipment (WEEE) Directive 2002/96/EC. Please refer to www.xrite.com for more information on X-Rite's compliance with the RoHS/WEEE directives.



FCC Notice

NOTE: This equipment has been tested and found to comply with the limits for a Class B digital device, pursuant to Part 15 of the FCC Rules. These limits are designed to provide reasonable protection against harmful interference in a residential installation. This equipment generates, uses and can radiate radio frequency energy and, if not installed and used in accordance with the instructions, may cause harmful interference to radio communications. However, there is no guarantee that interference will not occur in a particular installation. If this equipment does cause harmful interference to radio or television reception, which can be determined by turning the equipment off and on, the user is encouraged to try to correct the interference by one or more of the following measures:

- Reorient or relocate the receiving antenna.
- Increase the separation between the equipment and receiver.
- Connect the equipment into an outlet on a circuit different from that to which the receiver is connected.
- Consult the dealer or an experienced radio/TV technician for help.

Industry Canada Compliance Statement

This Class B digital apparatus complies with Canadian ICES-003. Cet appareil numérique de la classe B est conforme à la norme NMB-003 du Canada.

Limited Warranty

X-Rite, Incorporated warrants each instrument manufactured to be free of defects in material and workmanship for a period of 12 months (excluding battery), unless different local regulations apply. The battery is warranted for 6 months and replaceable at an authorized X-Rite service center. X-Rite will replace the instrument at no charge to you, provided you return it (postage prepaid, with proof of your purchase) during the warranty period, after the date of your original purchase of the instrument. The instrument is not eligible for repair.

Proprietary Notice

The information contained in this manual is derived from patent and proprietary data. The contents of this manual are the property of X-Rite, Incorporated and are copyrighted. Any reproduction in whole or part is strictly prohibited. Publication of this information does not imply any rights to reproduce or use this manual for any purpose other than installing, operating, or maintaining this instrument. No part of this manual may be reproduced, transcribed, transmitted, stored in a retrieval system, or translated into any language or computer language, in any form. This product may be covered by one or more patents. Refer to the instrument for actual patent numbers.

© 2009 by X-Rite, Incorporated "ALL RIGHTS RESERVED"

X-Rite is a registered trademark of X-Rite, Incorporated. PANTONE® and other Pantone, Inc. trademarks are the property of Pantone, Inc. All other logos, brand names, and product names mentioned are the properties of their respective holders.

CAPAROL Farben Lacke Bautenschutz GmbH
Roßdörfer Straße 50 · D-64372 Ober-Ramstadt
Telefon (0 61 54) 71-0 · Telefax (0 61 54) 71 13 91 · Internet: www.caparol.com

Niederlassung Berlin
Schnellerstraße 141 · 12439 Berlin
Telefon (0 30) 6 39 46-0 · Telefax (0 30) 63 94 62 88

KundenServiceCenter

Telefon: (0 61 54) 71 17 10
Fax: (0 61 54) 71 17 11
✉ kundenservicecenter@caparol.de

Planer- und Objektservice

Telefon: (0 61 54) 7 15 24
Fax: (0 61 54) 7 15 10
✉ pos@caparol.de



CAPAROL

Qualität erleben.